

# CP4410m-RGBH

Small screen auditoriums | Event cinema | Post-production | Screening rooms

The next phase of cinema illumination featuring Christie CineLife+™ electronics and Phazer™ illumination technology for post-production and cinema screens up to 42' (13m) wide.



## Key features:

- › **0.98" 4K SST DMD** – optimized for optical performance in a more cost-effective and compact projector
- › **Hybrid RGB laser with phosphor** – stunning visuals for all post-production and cinema screens, including high-gain silver screens
- › **Best-in-class operational efficiency** – 11.7 lumens per watt
- › **Smaller, quieter form factor** – ideal for small spaces and boothless installations with a compact chassis and less than 43dBA
- › **Backward compatibility** – fully compatible with existing 0.98" m2K cinema lenses and accessories
- › **Less maintenance, less downtime** – fully sealed optical path protects against dust ingress and only requires tool-free filter cleaning or replacement once per year in optimal environments
- › **Day-one performance** – electronic color convergence (ECC), Christie LiteLOC™, and enhanced wavelength diversity (EWD) ensure every screening looks as good as they did on day one

CHRISTIE  
PHAZER

Hybrid laser light source designed to fit the needs of your cinema and budget

CineLife+™

Advanced electronics featuring 4K 120 HFR capabilities, Electronic color convergence (ECC), ScreenFit™, and Mystique Cinema™

CINEMASTER CINEMA CALCULATOR

Find the right lens for your projector



## Specifications

## Christie CP4410m-RGBH

Brightness	nominal	• Up to 15,000 lumens <sup>1</sup>
	lifetime	• >50,000 hours <sup>2</sup>
Contrast ratio		<ul style="list-style-type: none"> <li>• Up to 6,000:1 full field on/off with UHC cinema lens</li> <li>• 2,500:1 Nominal full field on/off with HB lens</li> </ul>
Digital micromirror device		<ul style="list-style-type: none"> <li>• 4K 0.98" SST 3-chip DMD DLP Cinema®</li> <li>• 4096 x 2160 (4K)</li> </ul>
Color gamut	native gamut	• DCI-P3 with more color options to come
Processing electronics		<ul style="list-style-type: none"> <li>• Christie CineLife+ Series (Series-2 IMB compatible)<sup>3,4</sup></li> <li>• HDMI 2.0 x2</li> <li>• 1G Ethernet x1</li> <li>• 12G SDI x 4</li> <li>• DisplayPort 1.2 x2</li> <li>• Remote UI</li> <li>• Electronic color convergence (ECC)</li> <li>• Future compatibility with Christie VDR®</li> </ul>
Lens mount configuration		• Fully motorized Intelligent Lens System (ILS™)
Lenses		• HB and UHC: 1.13-1.66 / 1.31-1.85 / 1.45-2.17 / 1.63-2.71 / 1.95-3.26 / 2.71-3.89 / 3.89-5.43 / 4.98-7.69
Power input requirements		<ul style="list-style-type: none"> <li>• Input A: 200-240 VAC at 50-60 Hz, 16A</li> <li>• Input B (UPS input): 100-240VAC at 50-60 Hz, 10 A max</li> </ul>
Cooling		<ul style="list-style-type: none"> <li>• Liquid pressurized/TEC, self-contained</li> <li>• Heat extraction optional</li> </ul>
Power consumption		<ul style="list-style-type: none"> <li>• 11.7 lumens per watt<sup>5</sup></li> <li>• 1060W, nominal, @25°C 3620 BTU/hr</li> </ul>
Laser class		• Class 1 – Risk Group 3
Weight		• As installed: 132lbs max (60kg)
Dimensions (w/o lens)		• Size (LxWxH) 33.5 x 26.8 x 11.98" (850 x 680 x 304 mm)
Accessories		<ul style="list-style-type: none"> <li>• Rack mount pedestal</li> <li>• Rack mount pedestal adaptor</li> <li>• Extraction duct adaptor</li> <li>• Touch panel controller (optional)</li> <li>• UHC lens suite available</li> </ul>

<sup>1</sup> With existing high brightness cinema lens.

<sup>2</sup> Subject to variables specific to each installation. Please see Christie's laser best practices guide for more information.

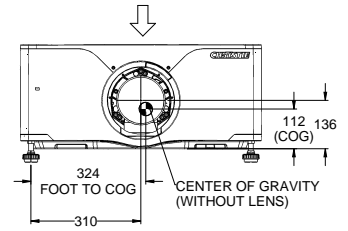
<sup>3</sup> Supports legacy Series 2 IMBs. Contact Christie for list of supported models.

<sup>4</sup> 4K 96fps support for HFR 3D with Christie IMB-S4 and 4K 120fps with the GDC SR-6400 IMB.

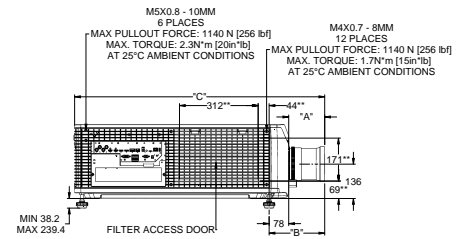
<sup>5</sup> Typical power consumption. May be impacted by environmental conditions.

## Front view

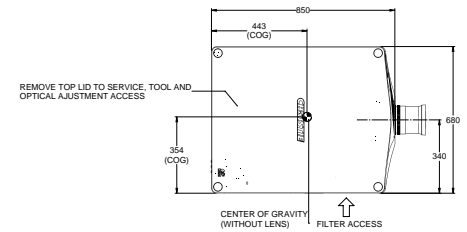
REMOVE TOP LID TO SERVICE, TOOL AND OPTICAL ADJUSTMENT ACCESS



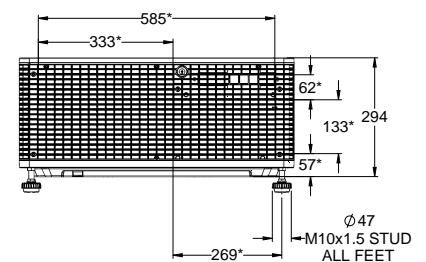
## Side view



## Top view



## Back view



### Corporate offices

### Worldwide offices

Christie Digital Systems USA, Inc. Cypress PH: +1 714-236-8610	China (Beijing) PH: +86 10 6561 0240	Colombia PH: +57 (315) 652-9620	Singapore PH: +65 6877 8737	United Kingdom PH: +44 (0) 118 977 8000
Christie Digital Systems Canada Inc. Kitchener PH: +1 519-744-8005	China (Shanghai) PH: +86 21 6030 0500	Germany PH: +49 221 99 512-0	South Korea PH: +82 2 702 1601	United States (Arizona) PH: +1 602-943-5700
	China (Shenzhen) PH: + 86 755 3680 7000	India PH: +91 (080) 6708 9999	United Arab Emirates PH: +971 (0) 4 503 6800	United States (Texas) PH: +1 469-757-4420

For the most current specification information, please visit [christiedigital.com](http://christiedigital.com)

Copyright 2026 Christie Digital Systems USA, Inc. All rights reserved. Our centers of excellence for manufacturing in Kitchener, Ontario, Canada and in Shenzhen, China are ISO 9001:2015 Quality Management System-certified. All brand names and product names are trademarks, registered trademarks or tradenames of their respective holders. "Christie" is a trademark of Christie Digital Systems USA, Inc., registered in the United States of America and certain other countries. DLP® and the DLP logo are registered trademarks of Texas Instruments. Performance specifications are typical. Due to constant research, specifications are subject to change without notice. CD110701-CP4410m-RGBH-Data-sheet-May-26-EN

